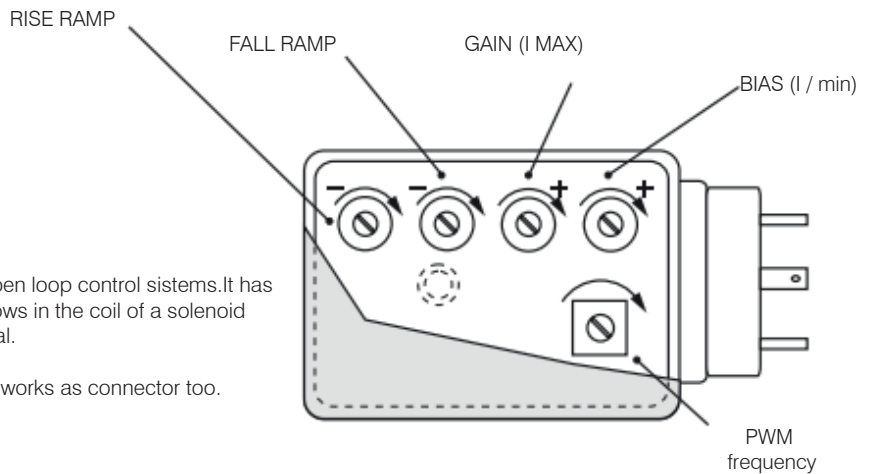
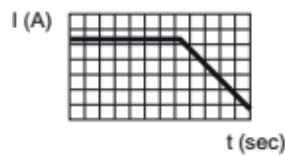
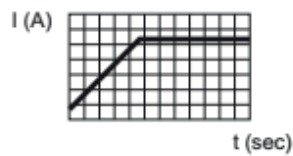
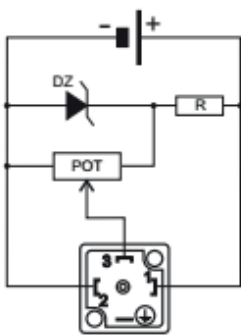
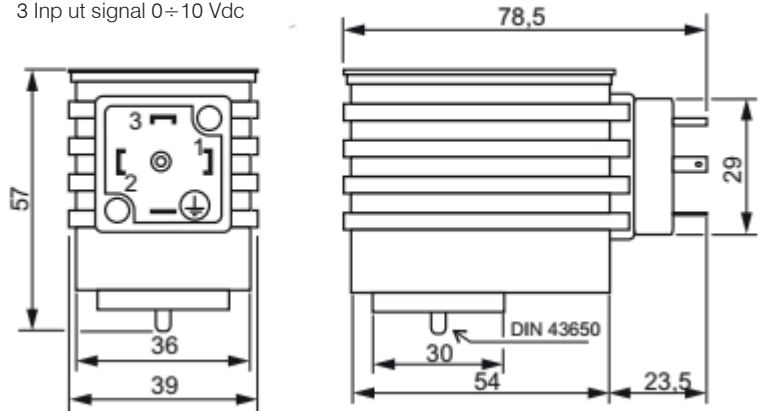


Electronic Regulator For Proportional Solenoid Valve (VPC)



- 1 Positive 24 - 12 Vdc ±10%
- 2 Negative
- 3 Input signal 0÷10 Vdc



This electronic regulator made to work in open loop control systems. It has been designed to control the current that flows in the coil of a solenoid valve proportionally to an analog input signal.

The electronic card is contained in box that works as connector too.

Technical Sheet

Supply voltage	24-12 Vdc
Voltage input signal range	0-10 Volt (0-5V)
Input impedance	100 Kohm
Max current adjustment range 1A (24Vdc) 2 A(12Vdc)	20-100%
Bias adjustment range	0-30%
Rise time ramp adjustment	0-3 sec
Fall time ramp adjustment	0-3 sec
Ramps are linear and independent	
PWM frequency set at 120 Hz (adjustable)	50 ÷ 400 Hz
Working room temperature	-10°C ÷ +50°C
Protection class	IP65